

# Design for Adaptive Use of ArClab

22/08/2024

SDE4-04-03

Group 3&4

 DEV LOGISTICS  
SERVICES PTE LTD  
Email: admin@devlogsvcs.com



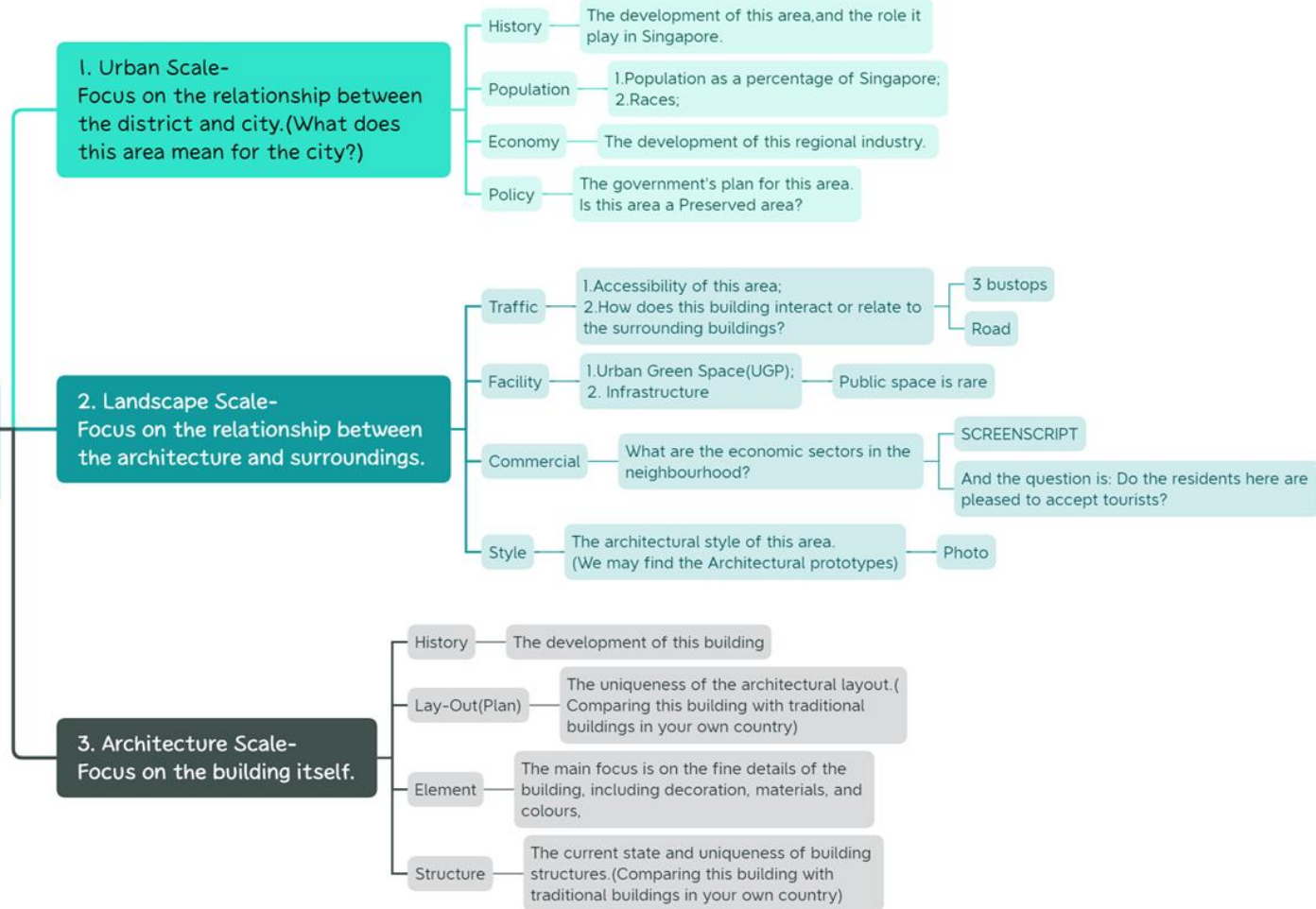
# **PART 1**

## **Research & Survey**

# Framework

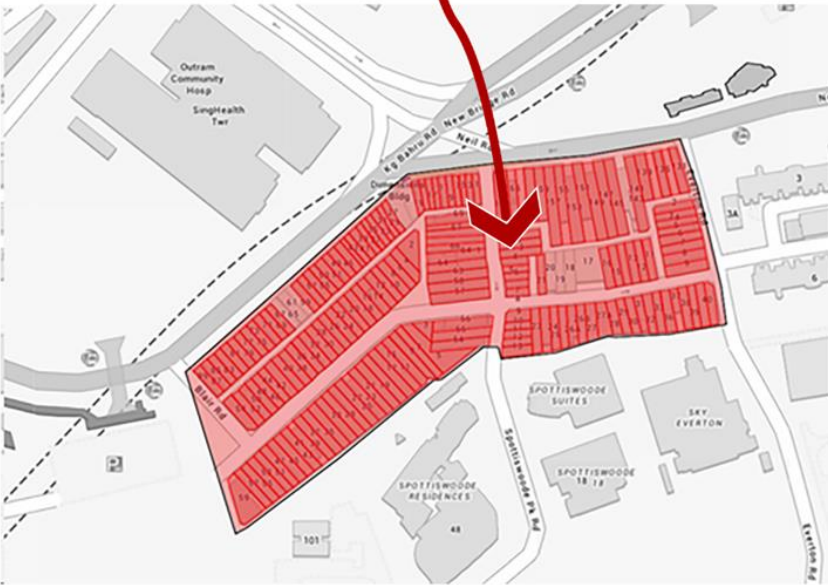


## RESEARCH ABOUT ARCLAB

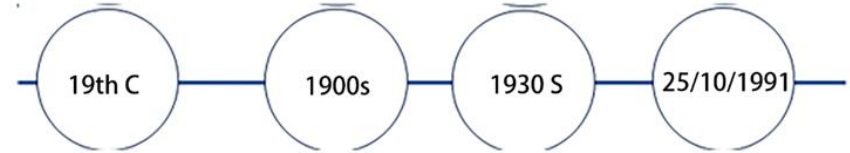


# Urban Scale

## The Conservation Area in Central Region



## Residential Area Next to CBD and Chinatown



This area was developed.

Further urbanization.

MRT station.

Conservation area.



Everton Road shophouses : general view

1862  
This 1862 photograph shows shophouses, located at Everton Road. Everton Road is named after Jose D'Almeida's "Everton" house. The road mentioned is near the Tarjong Paper area. Title devised by Library staff...



Everton Road shophouses : general view

1902  
This 1902 photograph shows shophouses, located at Everton Road. Everton Road is named after Jose D'Almeida's "Everton" house. The road mentioned is near the Tarjong Paper area. Title devised by Library staff...



Everton Road shophouses : general view

1982  
This 1982 photograph shows shophouses, located at Everton Road. Everton Road is named after Jose D'Almeida's "Everton" house. The road mentioned is near the Tarjong Paper area. Title devised by Library staff...



Everton Road shophouses : general view



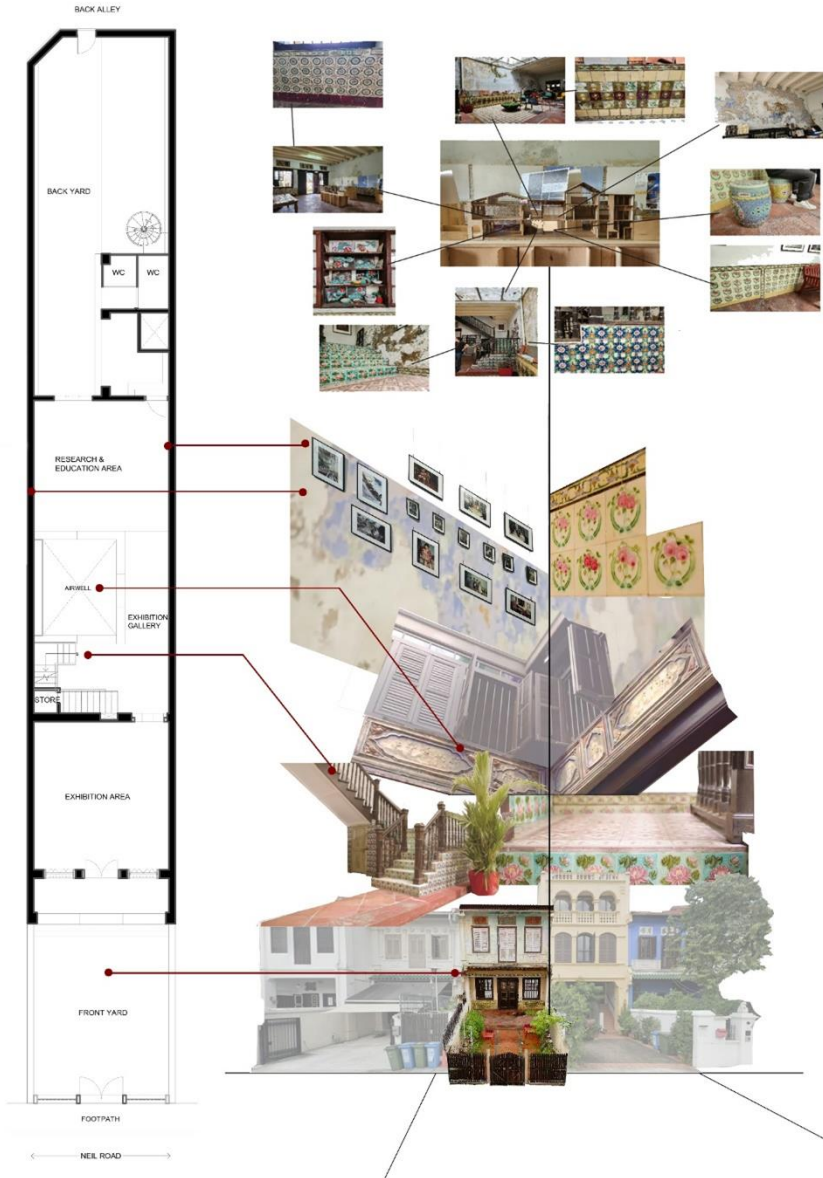
Everton Road shophouses : general view



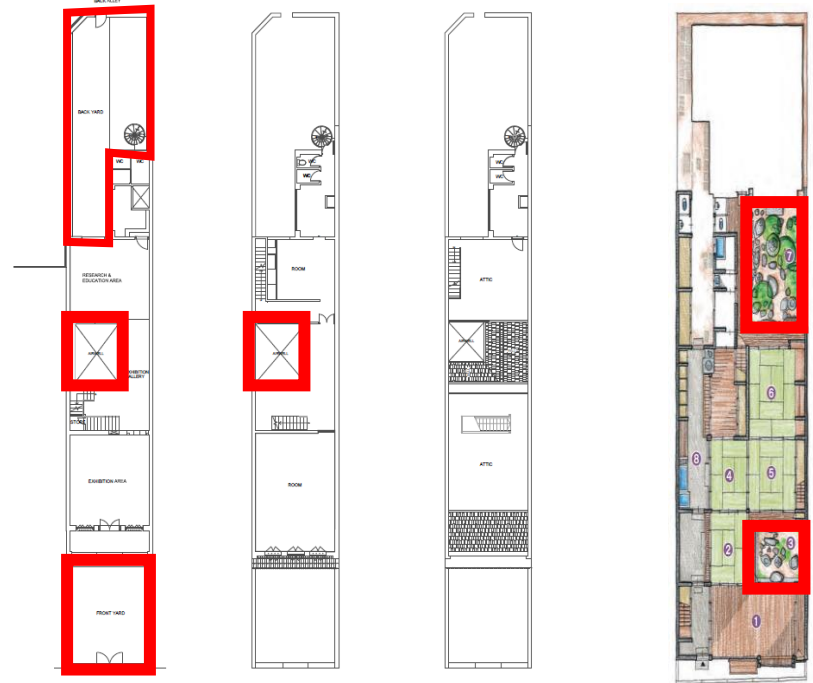
Everton Road shophouses : general view

**Middle & Upper-Middle Class, Tourism, CBD**

# Architecture Scale



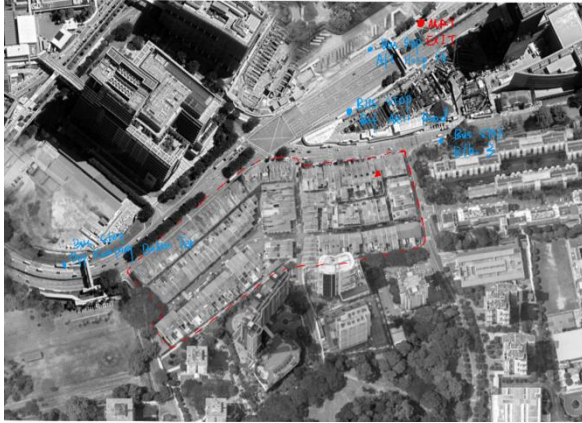
ArClab



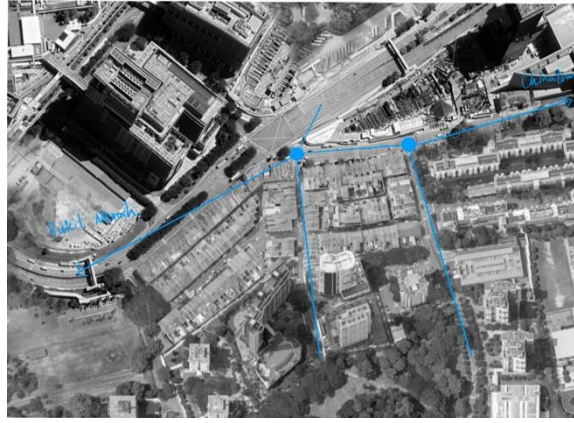
Kyo-machiya

**Decorations**  
**Façade**  
**Tiles**  
**Crafts**  
**Lay-out**

# Landscape Scale



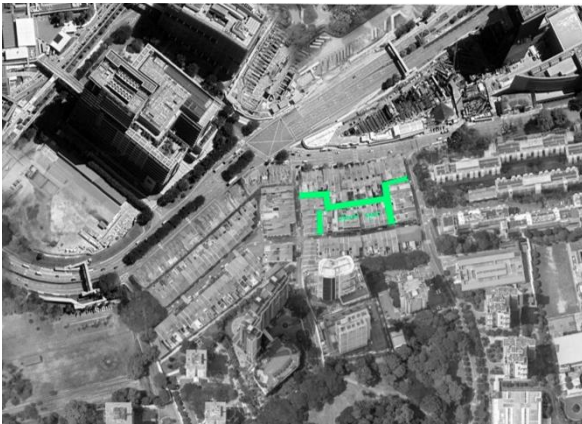
Public Transport



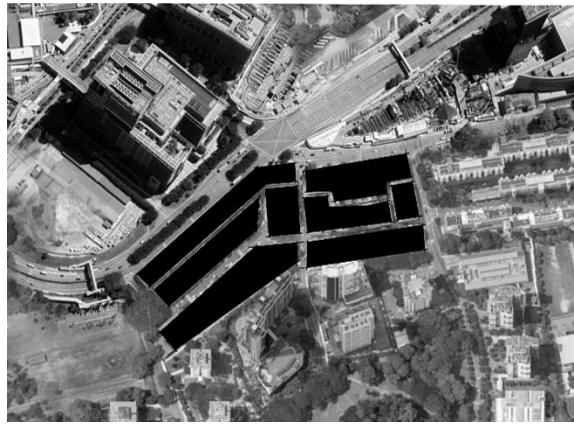
Connection with other district



Public Green Space



Informal Space in Community



District Fabric



Prototype

**Accessibility, Public Space, Unique Building Form, Community Atmosphere**

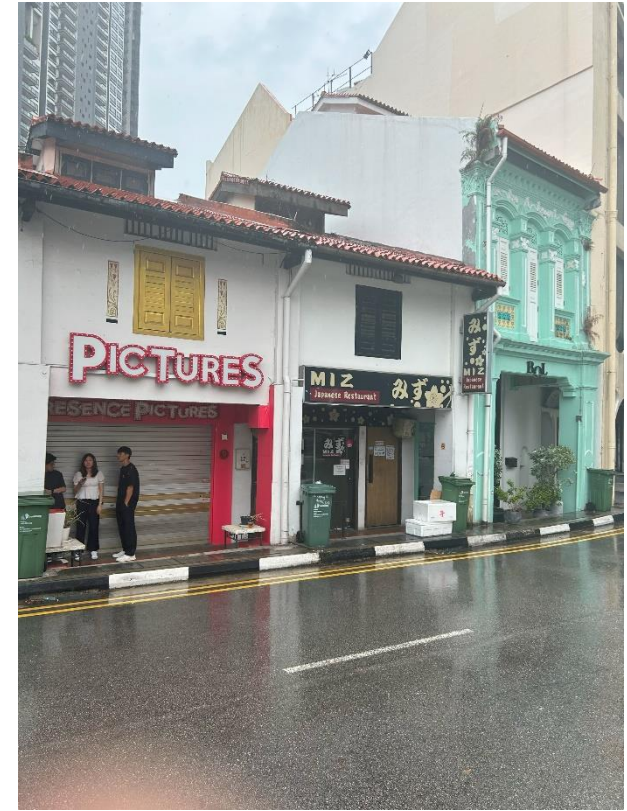
# The Feature of Singapore——A patchwork of fragments



Urban Scale



Landscape Scale



Architecture Scale



Walter Bendix  
Schönflies Benjamin

## The Aesthetics of Ruins

*“The ruins of buildings, the corpses of men, are the **destructive results of the action of nature on history**, and all mark the inevitable destruction of the organism. True meaning must therefore be **culled from the fragments**; and since allegory itself is a fragment of meaning, a dismembered part of a lost whole, **the meaning of history, the meaning of the totality, must be sought in these fragments.**”*

To know Singapore better, come to **Conservation Area**;  
To know Blair Plain Conservation Area better, Come to **ArClab**.

# Value

## Evidential Value



## Aesthetic Value



## Historical Value



## Communal Value



S

W

O

T

Evidential Value

**Records of family life** that have been preserved in their entirety.

**Monotony** in type of information.

Attract visitors to **traditional Singaporean life**.

The appeal is **not strong** enough.

Historical Value

One of the few historical buildings that is **open to the public**.

**Not the oldest building** in the area.

Allow visitors to have a more **immersive scenario experience**.

High volume crowds can **cause damage and impact on buildings**.

Aesthetic Value

Lots of **traditional decorations and handicrafts**.

Most of them can **only be viewed**.

Combining traditional decorative arts allows visitors to **experience traditional craftsmanship and art**.

Possible **increase in input costs**.

Communal Value

**Residential functions and community foundations** that continue to this day.

There are **fewer aboriginal people** in the area.

It can be used as a venue for **holding community events**.

The architectural character **lacks sufficient appeal** to the neighbourhood population.



# **PART 2**

## **Values & Adaptive Use**

# Understanding the Values

- ❑ Not simply conserving physical assets but also historical stories, knowledge and evidence of the ArClab.
- ❑ Understanding the fabric and evolution of the place and also to articulate the significance of ArClab. People value the historic environment as part of their cultural and natural heritage.
- ❑ Heritage values represents a public interest in places, regardless of ownership.
- ❑ The significance of a place embraces all the diverse heritage values that people associate with it, or which prompt them to respond it. These values tend to grow in strength and complexity over time, as understanding deepens and people's perception's of a place evolve.
- ❑ Understanding and articulating the values and significance of a place is necessary to inform decisions about its future.

# Evidential Value

**The potential of a place to yield evidence about past human activity.**

Evidential value deals with the history of the building and surroundings along with its storyline and time period.

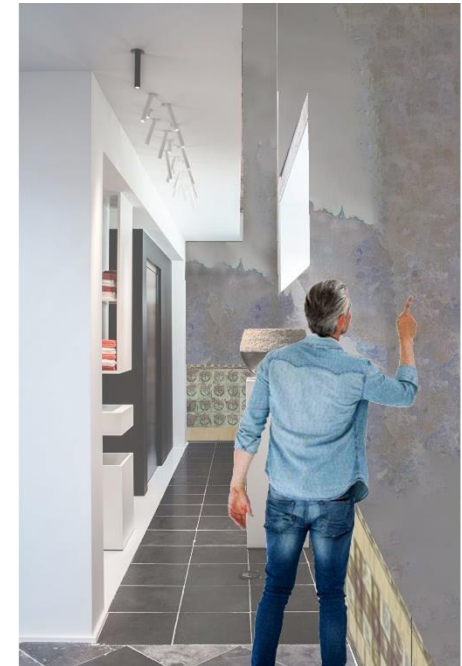
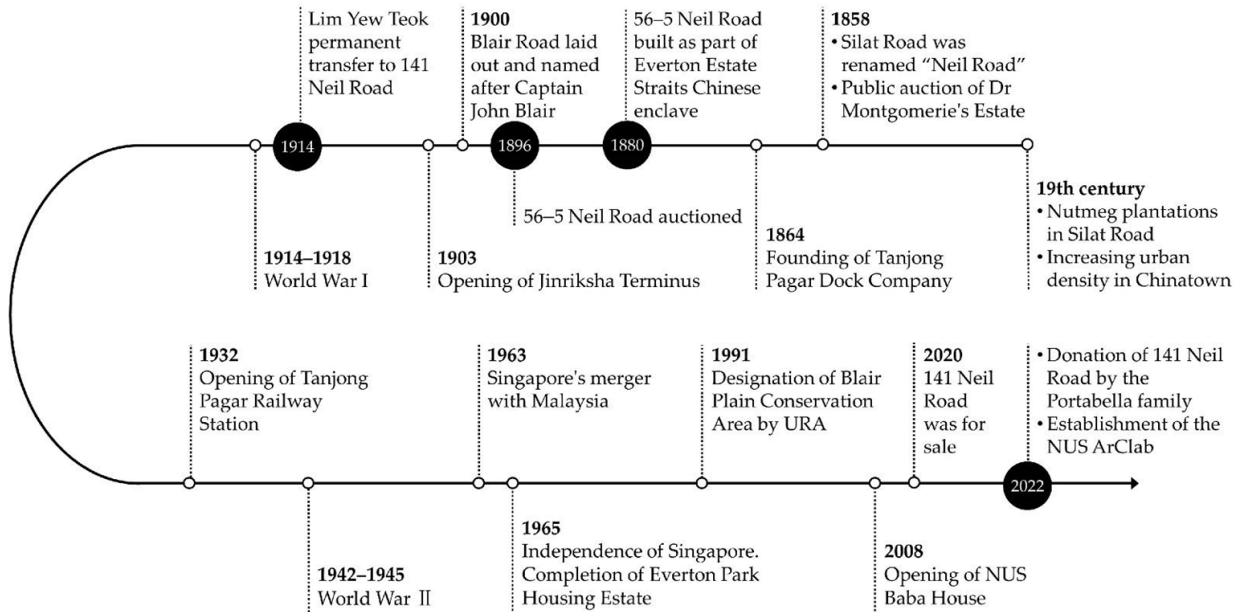
Urban sprawl of Chinatown (increasing urban density) transforms Neil road into one of the earliest residential enclaves established in Singapore for the Asian merchant class.



# Historical Value

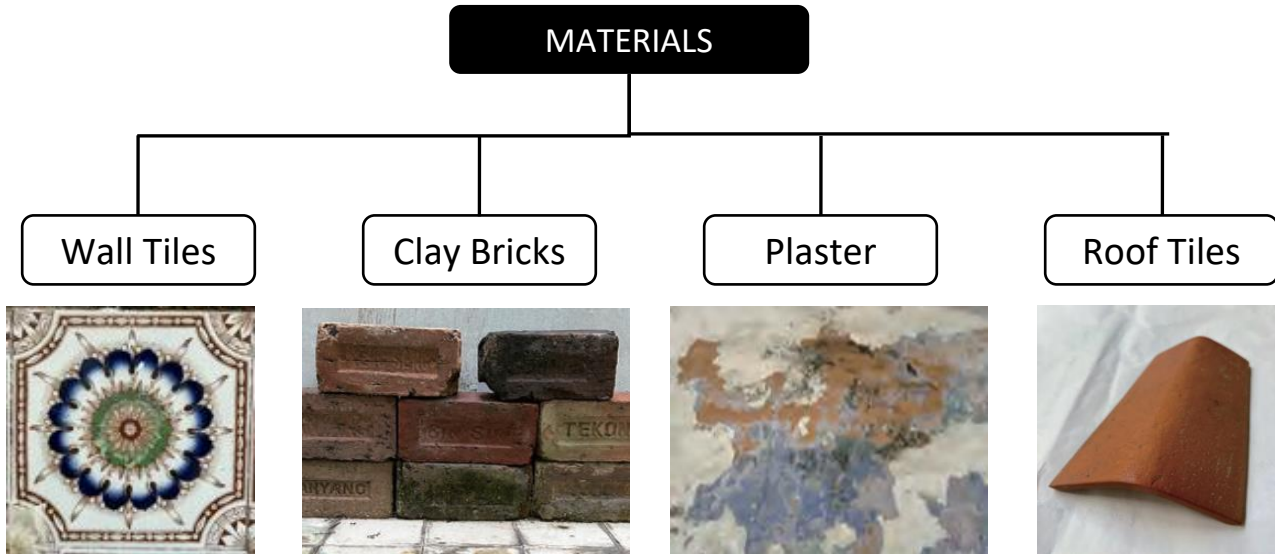
The ways in which past people, events and aspects of life can be connected through a place to the present – it tends to be illustrative or associative.

The perception of a place as a link between past and present people – is different from purely evidential value.



# Aesthetic Value

## The ways in which people draw sensory and intellectual stimulation from a place



Floor tiles and wall tiles are more than just decorative elements; they are vital carriers of cultural and aesthetic significance. These tiles, with their vibrant colors, unique shapes, intricate patterns, and delicate textures, showcase the artistic essence of early Nanyang architecture.



















Clay bricks are used in other structures and construct the building by masonry building. It is located in Indonesia, south of Singapore. The bricks are inscribed with the name of the place of origin and the company that produced them.

Plaster acts as an insulating material to reduce the transfer of heat from the walls, stabilizing the room temperature and increasing comfort. Its insulating properties also contribute to energy efficiency, reducing heat gain in summer, thereby reducing the need and cost of artificial heating and cooling, leading to lower overall energy consumption and electricity bills.

Clay brick: It is used as a structure and constructs the building by masonry building. The color is Earth red, and it consists of two sides of a triangle. And the surface is rough and not glossy. Looking at the tiles on the roof, it feels retro. It turns out that tiles are an important element and valuable material for shophouses.

# Aesthetic Value

## • Wall Tiles

Tiles Types	Number	Photo	Discretion	Number	Photo	Discretion
Floor Tiles	1		The surface is mottled with a mix of reddish-brown and green hues, featuring irregular diamond patterns. It is riddled with cracks and stains.	10		It is symmetrically rounded in shape, with striking green flowers in the center, surrounded by blue petals and brown edges. The material is ceramic, which is strong and durable.
	2		Grey tiles with cracks and stains on the surface. The pattern on the surface appears regular, suggesting a floral design. They are likely made of materials like concrete or cement. The texture is rough.	11		The colors are based on vivid blue, showing a fresh and serene tone. The tiles are carved with pomegranates, flowers and leaves, and the material is ceramic.
	3		The pattern is a combination of diamonds, dots, and flowers, and the main body is brownish-red and beige.	12		It shows a central cluster of green grapes, framed by purple and gray floral patterns. The colors blend harmoniously, creating a layered aesthetic.
	4		The floor tiles feature a simple design of blue and gray octagons. They are likely made of ceramic or stone and exhibit some wear on the surface.	13		The tile features a relief pattern, with a green base and pink lotus as the main motif. Its surface is smooth and lustrous, exuding a superior texture, made of ceramic material.
	5		The floor tiles are closely arranged by two shades of brown bricks, with a rectangular pattern, which is visually very harmonious and unified, and the material may be made of clay or similar materials.	14		The tile shows a simple yet eye-catching color palette of green, yellow, and gray. The floral and leaf designs are straightforward, avoiding intricate details.
Wall Tiles	6		This tile features a deep red background with a central yellow flower surrounded by green scroll motifs. The surface is glossy glaze.	15		This tile features a yellow background with white flowers and green leaves, creating a striking contrast.
	7		This tile features a mix of green and gray tones with a subtle wreath pattern in the center.	16		The tile features straightforward color combination of pink flowers, green leaves, and yellow background. The layered petals and serrated leaves have clear shapes.
	8		This tile has a warm yellow background with a central pattern of a floral wreath decorated with pink ribbons. The surface shows slight wear but retains vivid color contrasts.	17		The tiles feature a white color. Lacking elaborate patterns, they embody simplicity.
	9		This tile showcases a harmonious blend of light green, pink roses, verdant leaves, and a blue bowknot at its center.	18		The tiles feature a green color. Lacking elaborate patterns, they embody simplicity.

# Aesthetic Value

## • Plaster

plasterの価値について

Plaster acts as an insulating material to reduce the transfer of heat from the walls, stabilizing the room temperature and increasing comfort. Its insulating properties also contribute to energy efficiency, reducing heat gain in summer, thereby reducing the need and cost of artificial heating and cooling, leading to lower overall energy consumption and electricity bills.



Currently, the decoration is monochrome, but it is thought that in the past it was colored.

### Lime plaster

Lime plaster is able to absorb and release moisture. This ability helps regulate humidity levels within a space and prevent problems with damp and condensation.

### lime wash

Historically, lime washed is also called as “white-washed.” The reasons behind this centuries old practice are both aesthetic and practical. Lime-washed structures brighten up the surroundings and look great.



Over its long history, the walls used by the people who lived here have changed colour to pink, blue and green depending on who lived there.

For restoration

Limewash is easy to apply with a long-bristled brush in multiple layers, and it can be done by DIY enthusiasts. It's particularly useful for restoring historic buildings, and it can be used indoors and outdoors.

# Aesthetic Value

## • Clay Brick

introduction of clay bricks

Clay bricks are used in other structures and to construct buildings by masonry building.

Information

color	Red clay color
shape	square
texture	The surface is rough and not glossy
feeling	The roof it feels retro



It is located in Indonesia, south of Singapore. The bricks are inscribed with the name of the place of origin and the company that produced them.

Number	sketch	Discretion	Number	sketch	Discretion
1		It was square in shape, darkened with dirt throughout, and its original color was reddish-black compared to the others	5		The texture is earthy, the color is light dark, and the word NANYANG is engraved in the center.
2		In some places, it was greenish due to dirt. In the center was engraved the characters of Tekong Island, the place of origin.	6		The place of origin and the company that made it were unknown, and it was a darkened red-clay color. It was a mixture of similar dark poetry.
3		It was dark red-clay and darkened in places. In the center, the word SINSIN was engraved.	7		It has a dark red-clay color, mixed with pebbles. The lower right part was severely chipped.
4		The lower part is dirty enough to form moss, and the color seems to be light brown.	8		It was stained green as if it had moss on it. In the center, I couldn't find the place of origin or the name of the person who made it.



# Aesthetic Value

## • Roof Tiles

Roof Tiles: It is used as a structure and constructs the building by masonry building.

Color : Earth red

Shap : It consists of two sides of a triangle

texture : The surface is rough and not glossy

feeling : Loking at the tiles on the roof it feels retro



It turns out that tiles are an important element and valuable material for shophouses

## About the shop house in Singapore

example



Batam island

It is located in Indonesia, south of Singapore.

The bricks are inscribed with the name of the place of origin and the company that produced them.

Continued Use and  
Maintenance of  
Materials



Economic Cost  
Reduction



Achieve  
Environmental  
Sustainability

- Utilize Existing Materials
- Reduce New Material Procurement
- Minimize Waste Generation
- Extend Building Lifespan

- Utilizing existing materials reduces the need to purchase new ones.
- Fewer new materials mean lower transportation costs and resource usage.
- Maintaining existing structures reduces the costs associated with new builds and demolitions.

- Reduce Resource Consumption
- Lower Carbon Emissions
- Support Sustainable Development
- Minimize Waste

# Communal Value

The Blair Plain conservation area has witnessed Singapore's growth as a nation, experienced the effects of trade and globalisation, and continues to stand tall despite its stature.

The Blair Plain Conservation area is one of our "hidden gems" in Singapore. Comprising of Everton Park, Spottiswoode Park and Kampong Bahru Road, there is a lot of History and Culture, Chill and Style cramped into a relatively small area.

## A memory lane for me

Review of Blair Plain Conservation Area

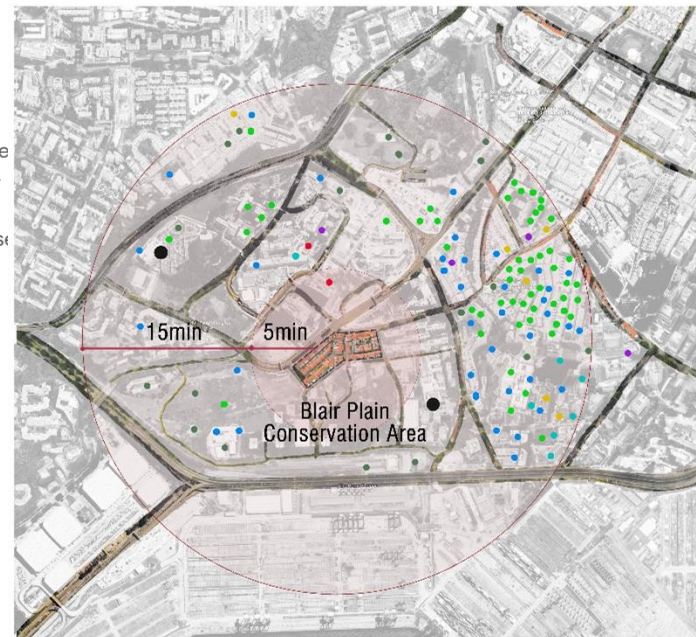
●●●●○ Reviewed June 14, 2023  via mobile









The Blair Plain Conservation Area always impressed me with the architecturally intrinsic compact cluster of 'baba' two- and three- Storey shop houses and terrace houses. The conserved houses are colorful and attractive with their unique floor tiles and decorative wooden doors and along the five-foot way studded with beautiful potted plants of beautiful flowers and greenery. The atmosphere is tranquil and serene, and I enjoyed roaming around these nostalgic and photogenic conserved houses located the four main roads: Spottiswoode Park Road, Neil Road, Everton Road and Blair Road.

I have an emotional attachment to these houses as my late great grandfather was living in one of these gorgeous houses along Blair Road when he was alive. I was only 6 years old when he passed away at the age of 92. He was a successful merchant and was the founder of the Soh Clan Association. I could still vividly remember the timber staircase in his house, and you could hear the foot stomping as you ascended the stairs to the second Storey and the many Peranakan antique vases he had in his back yard.

I also noticed few of the street murals drawn by the self-taught Mr Yip Yew Chong and I think they fit well into the early colonial life picture of Singaporeans.

This place is a memory lane for me.



-  Restaurant
-  Hospital
-  Hotel
-  Religion Architecture
-  Homestay
-  Shopping Mall
-  Office Building
-  School

"A very nostalgic town and for those who wish to reminisce singapore olden days"

M\*\*\*\*\* R\*\*\*\* B\*\* R

"Great streets to walk along to admire the various shophouses."

J\*\*\*\*\* X\*\*\*

Conducive , old-feel in modern surroundings. No shows here, just offices.



Blair Plain conservation area encompass the area around Everton Road, Spottiswoode Park Road and Blair Road.

The conservation area is lined with 2-storey and 3-storey Shophouses and terrace houses of various architectural styles.

Many rich Straits Chinese built their houses here, west of Cantonment Road, to be at a quieter place away from the crowded and noisy Chinatown.

The Blair Plain Conservation Area shophouses and terrace houses possessed a rich diversity of architectural styles of different periods with Malay, European, Colonial and Chinese design style influences.

Blair Plain Conservation Area was gazetted for conservation in 1991 by URA.

A beautiful area with a rich heritage and worth visiting a part of history.



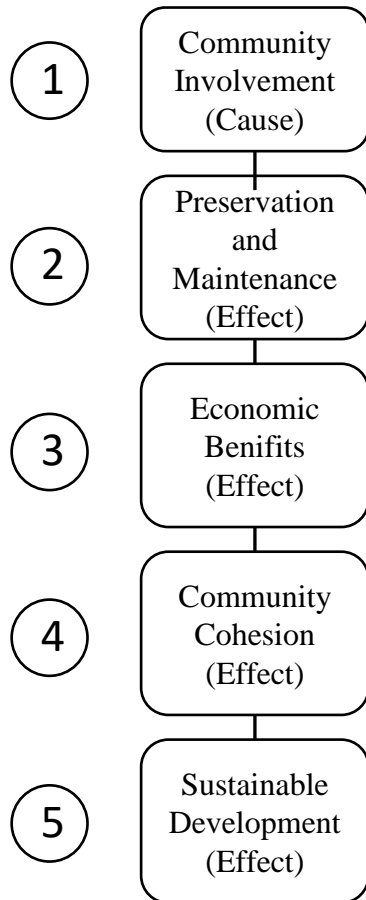
"The Blair Plain conservation area is a very scenic area to breathe in Peranakan culture (there is a even a shop selling Peranakan antiques named Guan Antiques around the area) and see loud, colorful shophouses. For me the highlight of the area would be 157 Neil Road. Known as the NUS Baba House, it is a Peranakan pre-war terrace-house which was formerly owned by the family of a 19th-century shipping tycoon Wee Bin who settled in Singapore, after arriving from the southern Chinese province of Fujian There are also architectures that had clinched the prestigious Architectural Heritage Awards around the area. They are as follows : 1. 149 Neil Road 2. 55 Spottiswoode Park Road 3. 64-1 Spottiswoode Park Road 4. 153 Neil Road 5. 55 Blair Road 6. 59 Blair Road Things to take note when you're exploring the area : 1. Do be careful of personal safety - I had seen locals and tourists alike who had been trying to take pictures on the road (those that car move on ) and were almost run down by cars! Hence, do be careful of the traffic around you when taking photos and choose a safe spot. 2. Do respect privacy - Many of the houses are private residences and they are normal people like you and me going about their daily lives (watching tv, reading, picking their nose). Try to be more sensitive about it when you're exploring one of Singapore's most scenic spots and don't intrude their lives unnecessarily. If you want to know more about Singapore, do visit me on Facebook (@heristagesg) and Instagram (@heristage). Follow me to receive daily Singapore factoids and where to go !"

A\*\*\*\*\* G\*\*

# Communal Value

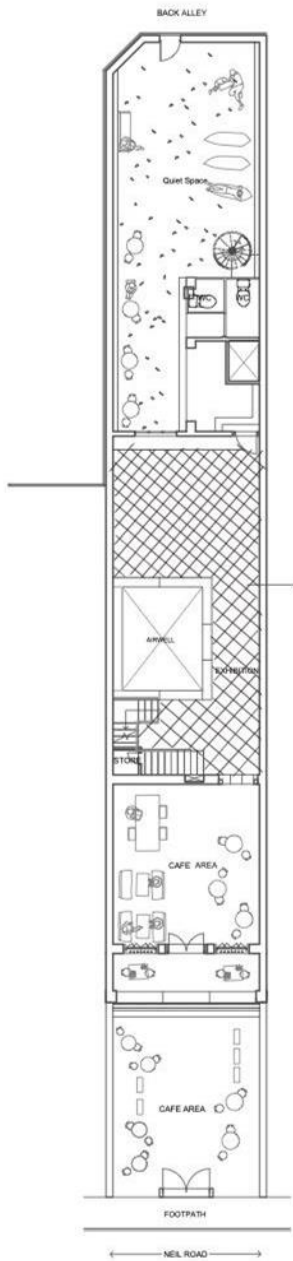
The meanings of a place for the people who relate to it, or for whom it figures in their collective experience or memory.

By organizing regular cleaning and conservation activities, volunteers help protect the building's architectural integrity and ensure that it continues to serve as a vibrant hub for community engagement and economic revitalization.

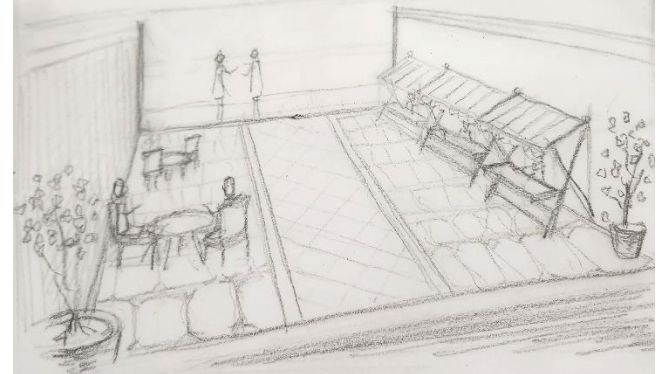


# **PART 3**

## **planning**

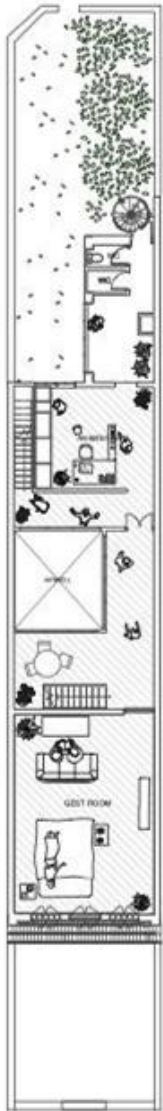


Back yard



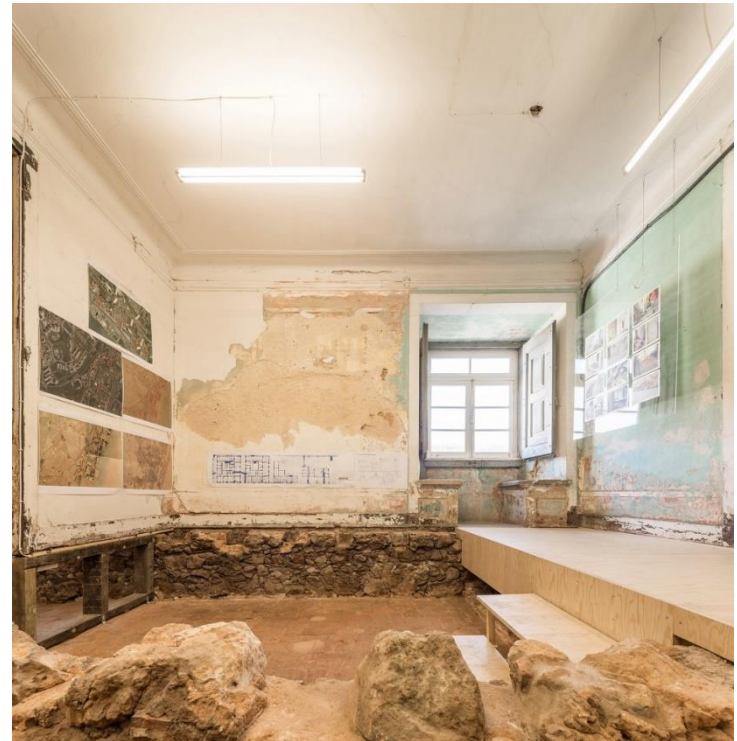
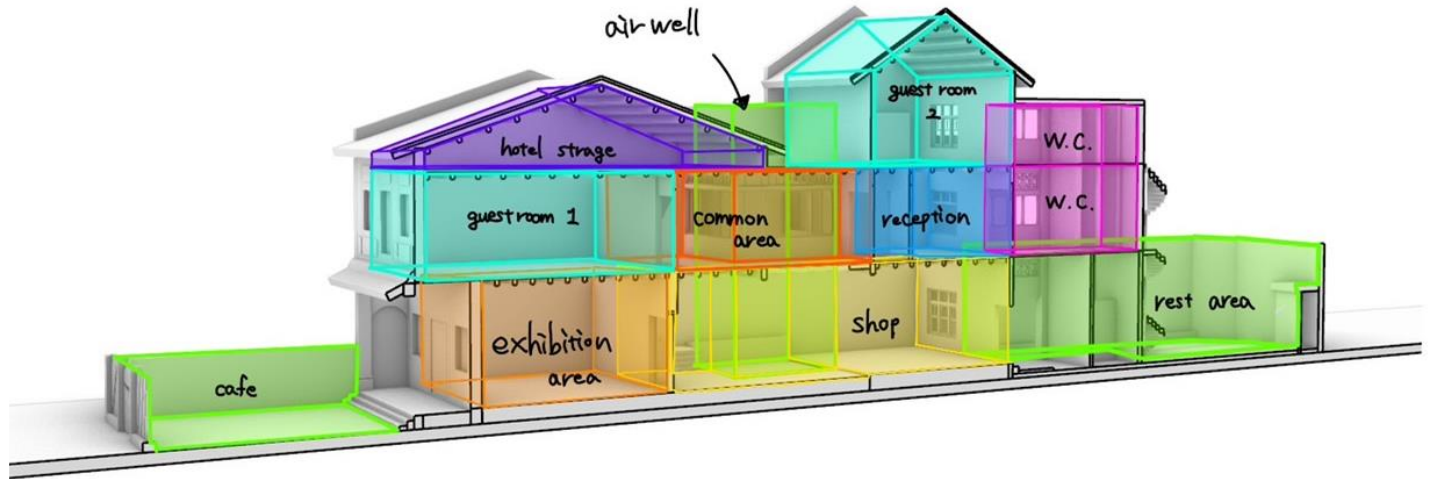
front yard

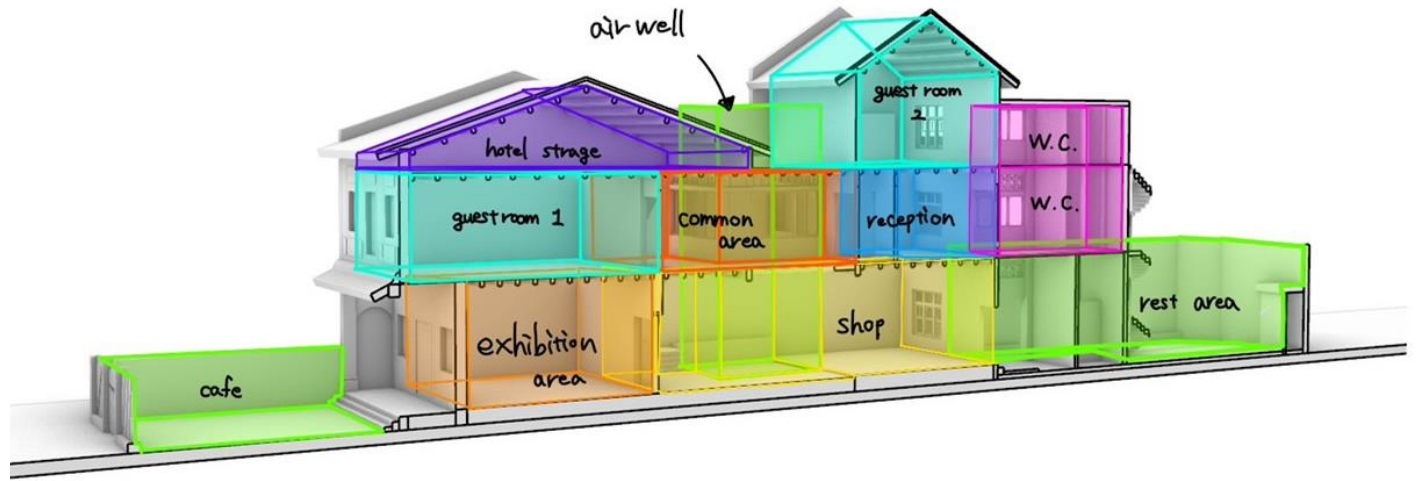
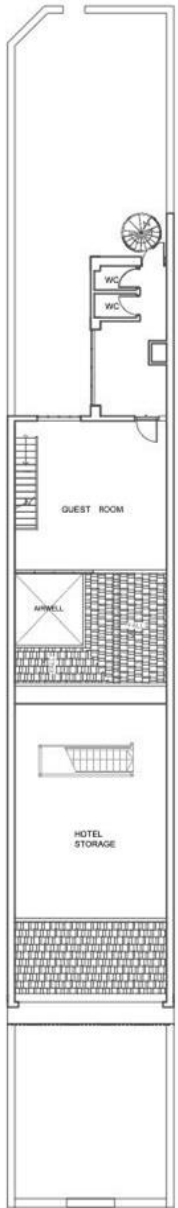
FIRST FLOOR PLAN  
 → Public



SECOND FLOOR PLAN

EXISTING PLANS





ROOF MEZZANINE PLAN